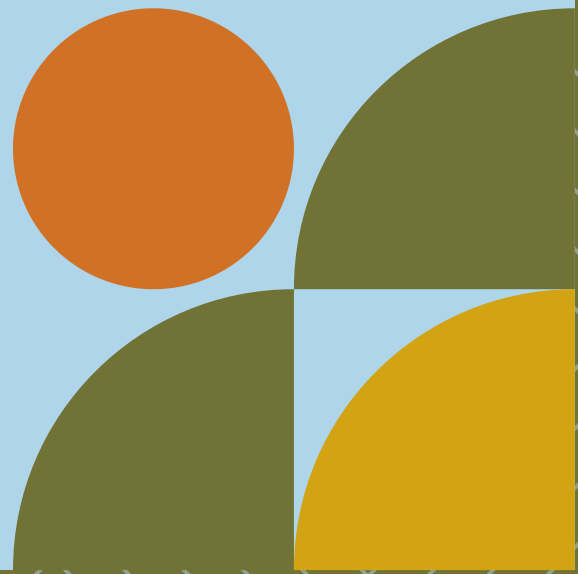
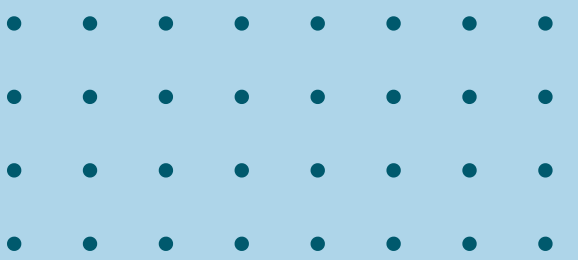


KULSHANCLT

**GROWING A COMMUNITY
EVERYONE CAN AFFORD**



• • • • •
• • • • •
• • • • •
• • • • •

ABOUT US

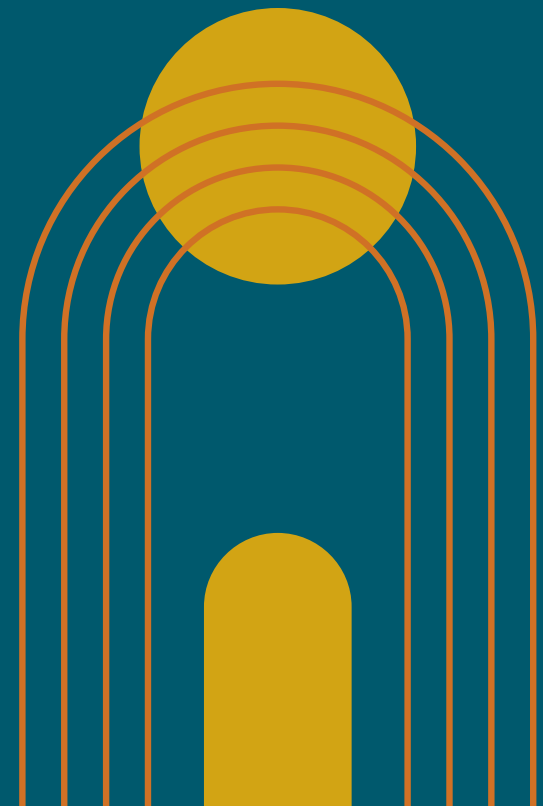
Rose Lathrop
Executive Director

Kit Topaz
Development Director

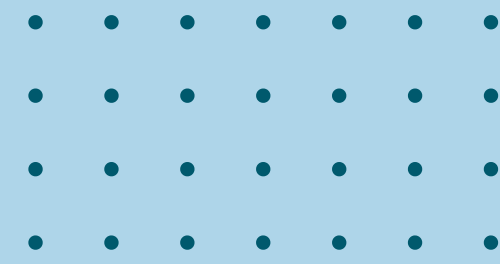
Molly McKinney-Holcomb
Grants/Communications
Coordinator



WHAT IS A CLT?



COMMUNITY LAND TRUST



A family or individual purchases a house that sits on land owned by the community land trust.



The purchase price is more affordable because the homeowner is only buying the house.

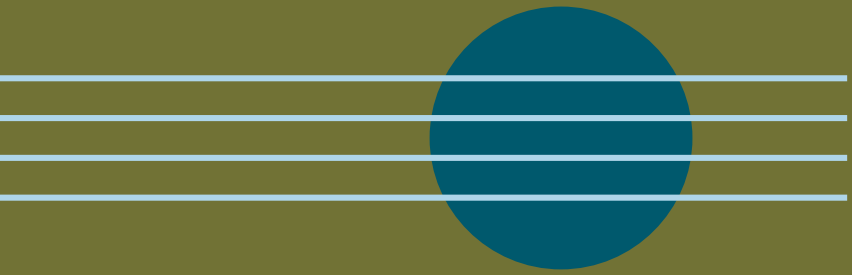


The homeowners lease the land from the community land trust in a long-term (often 99-year), renewable lease.



The homeowners gain equity and 1.5% simple interest each year they own the home. They agree to sell it at a restricted price to keep it affordable forever.

OUR STORY



KULSHANCLT

strengthens community by holding land in trust for permanently affordable homeownership and other community needs, and by offering financial and educational services to people of limited means.

1999

Founded by Paul Schissler, Greg Winter, & Bill Sterling

2002

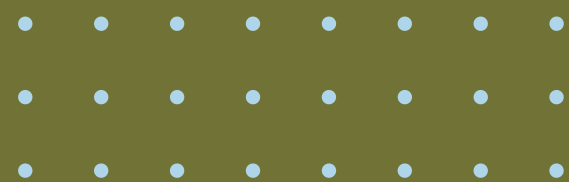
Brought first home into trust

2007

First multi-home development:
14 homes at Matthei Place

2025

142 homes in trust;
over 75 homes in pipeline



HOUSING IN WHATCOM COUNTY

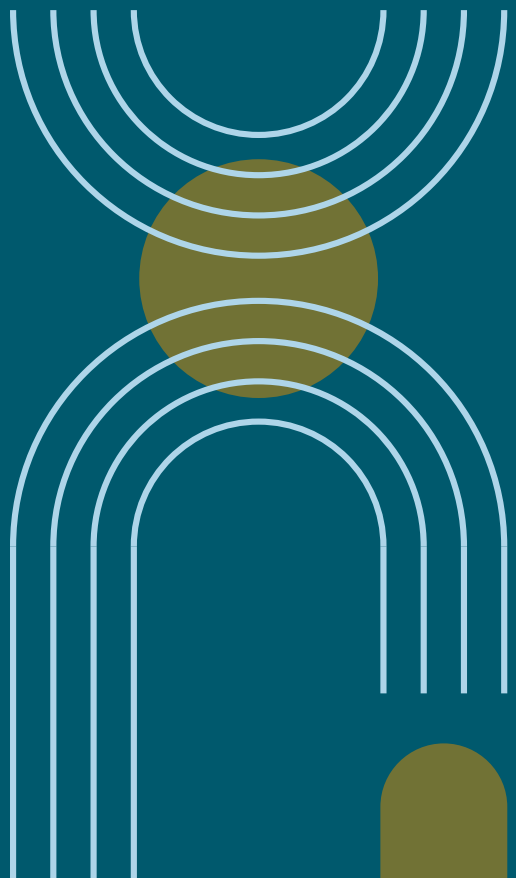
2002 median household income: \$39,568

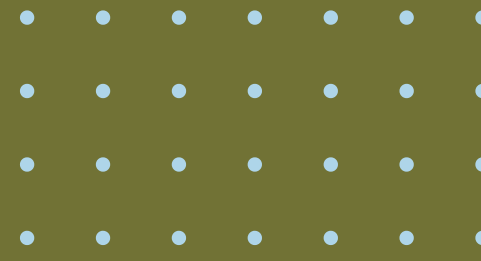
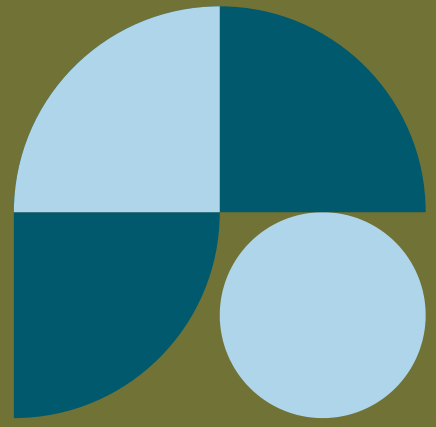
2002 median home price: \$159,900

2022 median household income: \$79,220

2022 median home price: \$572,500

While the median family income **barely doubled** in 20 years,
the median home price **more than tripled**.



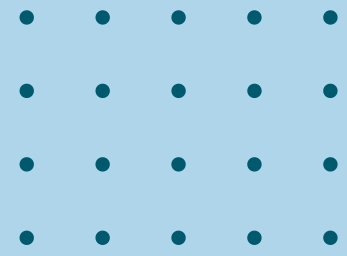


With \$944 to put toward housing each month,

**CAN ALICE BUY A HOME
IN WHATCOM COUNTY?**



BUT WHAT IF SHE COULD?



KulshanCLT homeowners, on average, pay less than \$1000/month for housing costs.

REAL EQUITY

\$1000 per month:

- \$12,000 per year
- \$60,000 in 5 years
- Plus 1.5%

PERSONAL BENEFITS

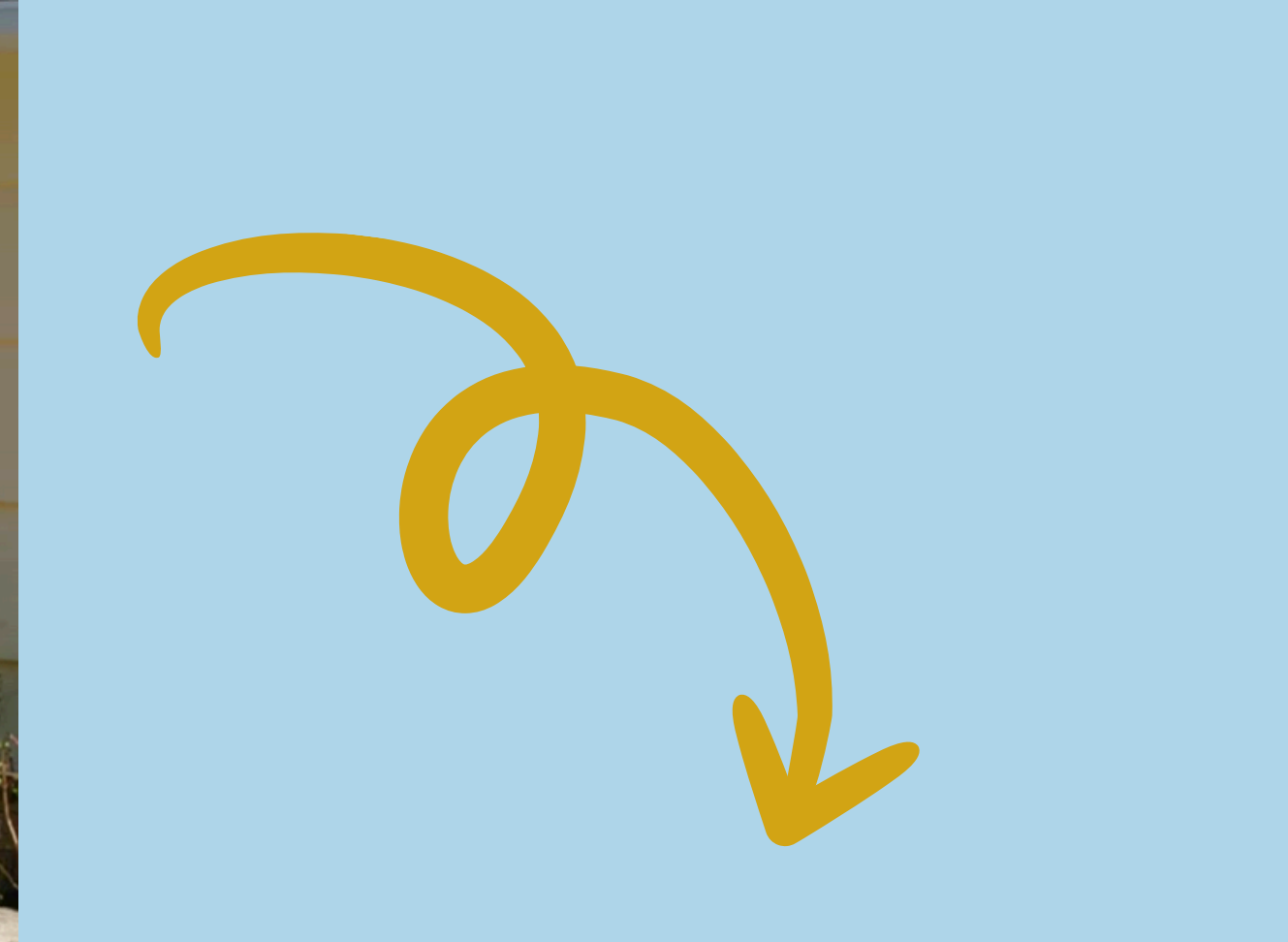
Improvements in:

- mental and physical health
- educational outcomes
- economic stability

COMMUNITY BENEFITS:

Improvements in:

- safety
- connection
- local economy



“I could make decisions not solely based on where I could live, because I knew we had a house. It was definitely a lifesaver for me and my kids.”





“My heart **leapt** at the idea of being able to control my own space again. And have a garden! I just feel safe. I feel right. And I think that’s a human condition, to want a home.”



“We don’t have to worry anymore about where we’re going to live. We’re solid. We know we’re going to live here.”



*After moving 8 times in their
child's first 10 years of life:*

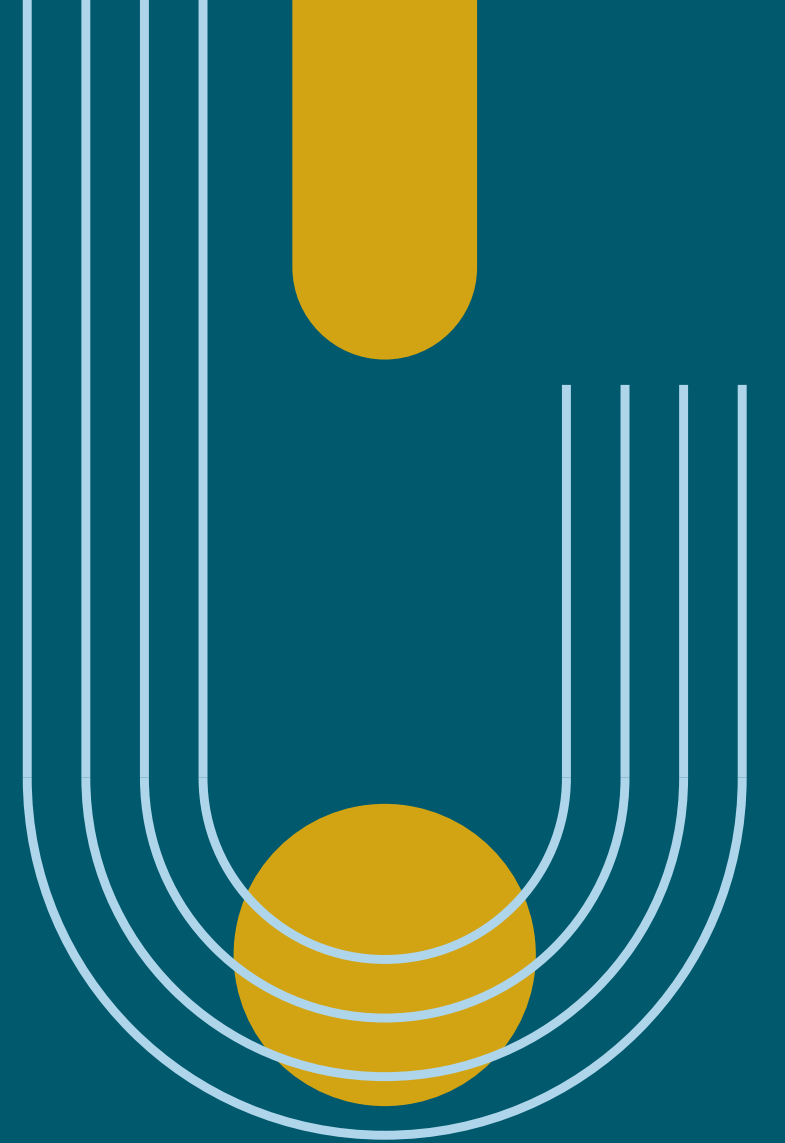
“To get to purchase a brand new home with everything my child and I could ever need, and with a monthly mortgage that was even lower than what I was paying for rent — **the warmth, comfort, and most of all stability are almost too good to be true.**”



WHY NOW?

2025: a building year

- adding staff
- building homes
- community outreach



2026 and beyond:

- more homes
- more families
- more hope

**THANK
YOU**



KULSHANCLT

