



# Ferndale Food Bank

HELP STOP HUNGER

# The Mission

Distributing food and support to all community members in need, with dignity, respect, and understanding

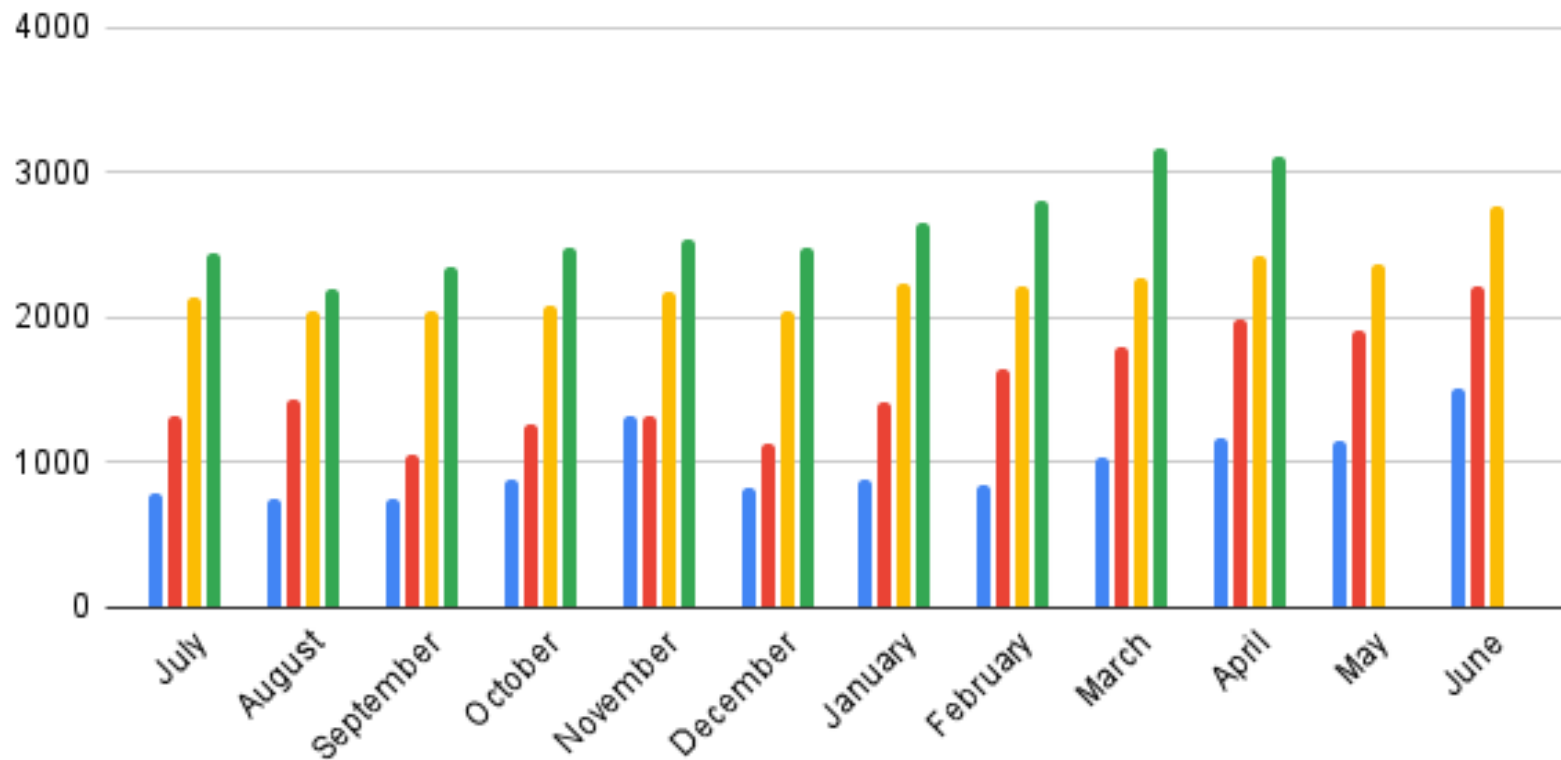
# Who We Serve



- 7,280 individuals and over 59,000 mouths
- 21% Seniors, 34% children
- 20% Latinx, 12% Ukrainian, 6% Russian
- 65% with pre - existing health conditions
- At least 15 languages represented overall

## Individuals Served by Month

FY 22 FY 23 FY 24 FY 25



# Services Offered



- **Free Grocery Distribution**
  - **Monday, Wednesday, Saturday 9 - 11 AM**
- **Deliveries**
  - **Home and Dropsite**
  - **About 100 households each week**









Fishsticks  
stos de pescado  
рибні палички



# How We Accomplish the Mission



- **Food Acquisition**
  - **Grocery Rescue/Donations: 750,000 lbs. each year**
  - **Food Purchasing: At least 50% of food inventory purchased**





# How We Accomplish the Mission



- **Volunteers**
  - **Over 200 volunteers each year for over 14,000 hours**
  - **About 50 regular volunteers each week**







# Farm Worker Delivery Project



- 56 households at Sunrise Farms, over 260 Individuals
- In partnership with Viviendo Bien and Agape Service Project
- Addresses barriers to service
  - Accessibility of hours
  - Safety of accessing services

# Each Distribution



- **Dried Goods:** Dried beans, masa, rice, canned proteins, canned veggies and fruit, oatmeal/cereal
- **Produce Bags:** Onions, tomatoes, tomatillos, peppers, nopales, bananas, berries, chilacayotes, eggs





# Program Expense



Item	Cost per Item	Cost x 56 boxes x 7 weeks
Oatmeal	\$0.97	\$380.24
Canned Corn	\$0.77	\$301.84
Canned Fruit	\$1.01	\$395.92
Canned Chicken	\$1.17	\$458.64
Masa	\$3.71	\$1,454.32
Dried Pinto Beans	\$0.83	\$325.36
White Rice	\$0.56	\$219.52
Produce Boxes	\$40.00	\$13,500.00
Nopales	\$5/lbs.	\$500.00
Half Dozen Eggs	\$3.00	\$1,000.00
<b>Total</b>	<b>\$56.50</b>	<b>\$22,150.00</b>

# Allows Us to Be a Part of:



- Accessibility of healthy, culturally appropriate food to a crucial and underserved population in our community
- Support of small - scale, BIPOC owned, transitioning organic farming