

GOVERNOR INSLEE'S
Interagency Workgroup
on Poverty Reduction

Lori Pfingst, PhD

Chief of Programs & Policy

Economic Services Administration | Community Services Division

Department of Social & Health Services

Background

HB 2518

2016 REGULAR SESSION

Bill “promoting the reduction of intergenerational poverty” first introduced idea for greater state accountability for poverty reduction.

Gets through House and Senate committees, but fails to get a floor vote in Senate.

HB 1482/SB 5440

2017 REGULAR SESSION

Bill introduced “establishing the legislative-executive WorkFirst poverty reduction oversight task force”. Builds on HB 2518 by expanding the scope of an existing task force to focus more broadly on poverty reduction.

Gets through House and Senate committees, but fails to get a floor vote in Senate; however, much of the bill is written into budget proviso.

GOVERNOR DIRECTIVE

November 6, 2017

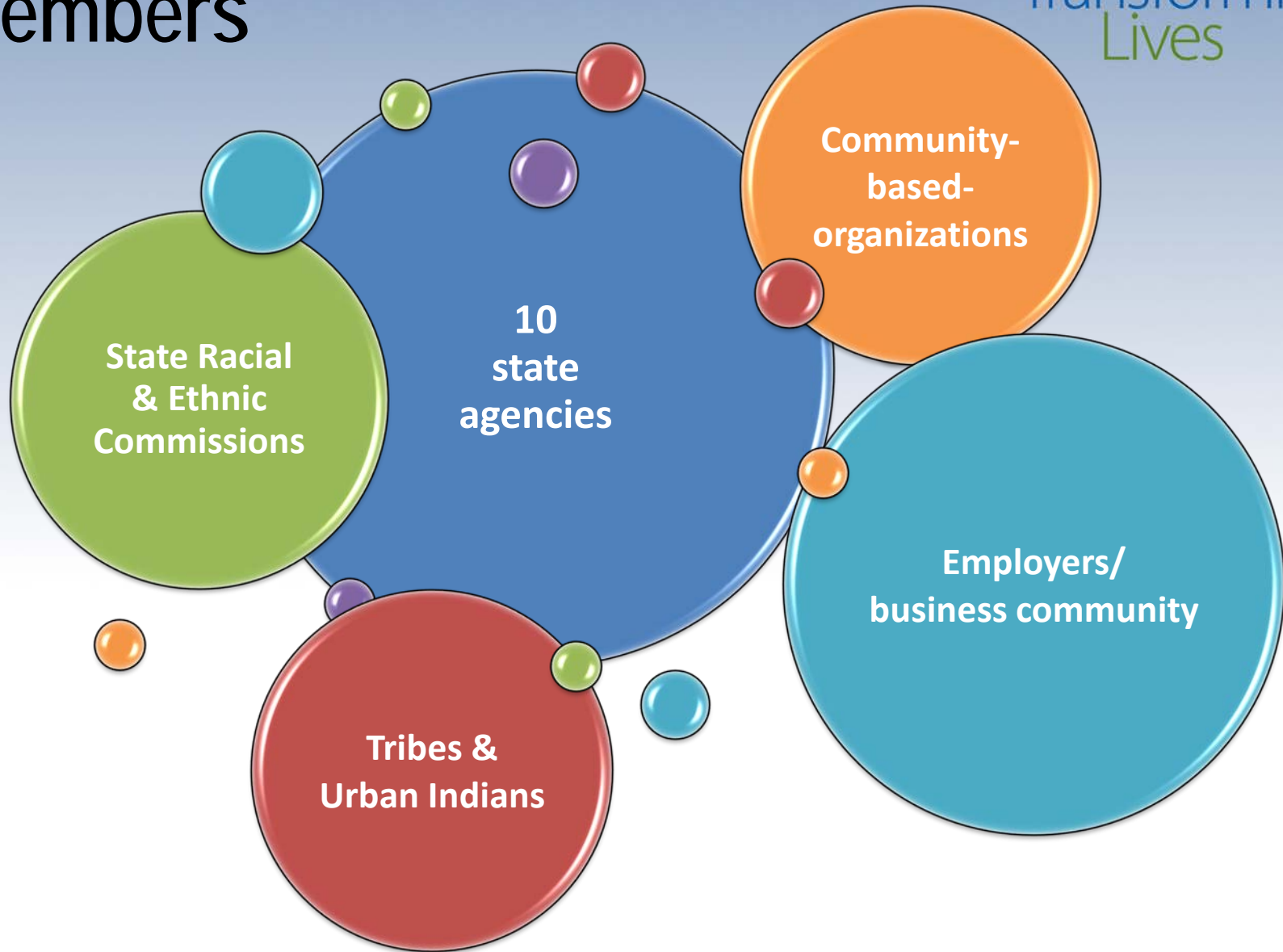
Creates an Interagency Workgroup on Poverty Reduction, with many of the same elements of HB1482.

Directive creates first-of-its-kind group in Washington State.

Key Elements of Directive

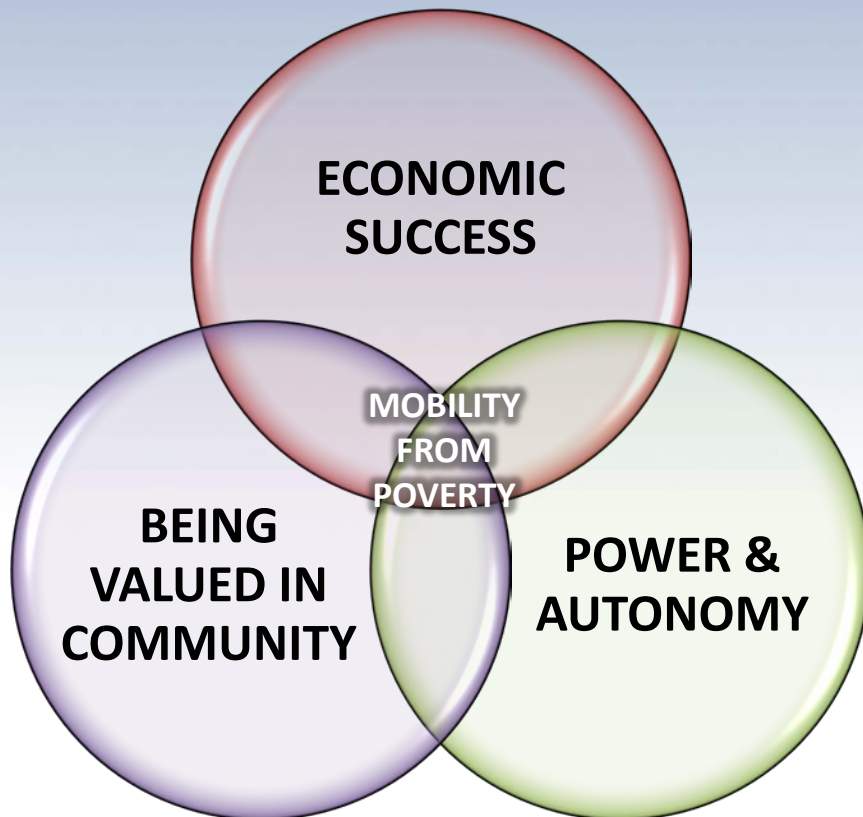
- Focus on poverty and building intergenerational opportunity and well-being
- Broad group of stakeholders tasked with developing a comprehensive 10-year strategic plan
- Key differences from past efforts:
 - Equity focus
 - Recognition of people as experts in their own lives
 - Recognition of community innovation/partners

Members



Defining & Measuring Success

Transforming
Lives



Economic success is foundational and entails many of the traditional measures of poverty, including income and assets. However, it is not enough.

Equally important are power and autonomy, which speak to individual agency, having a sense of control and a say in the trajectory of one's life and one's community.

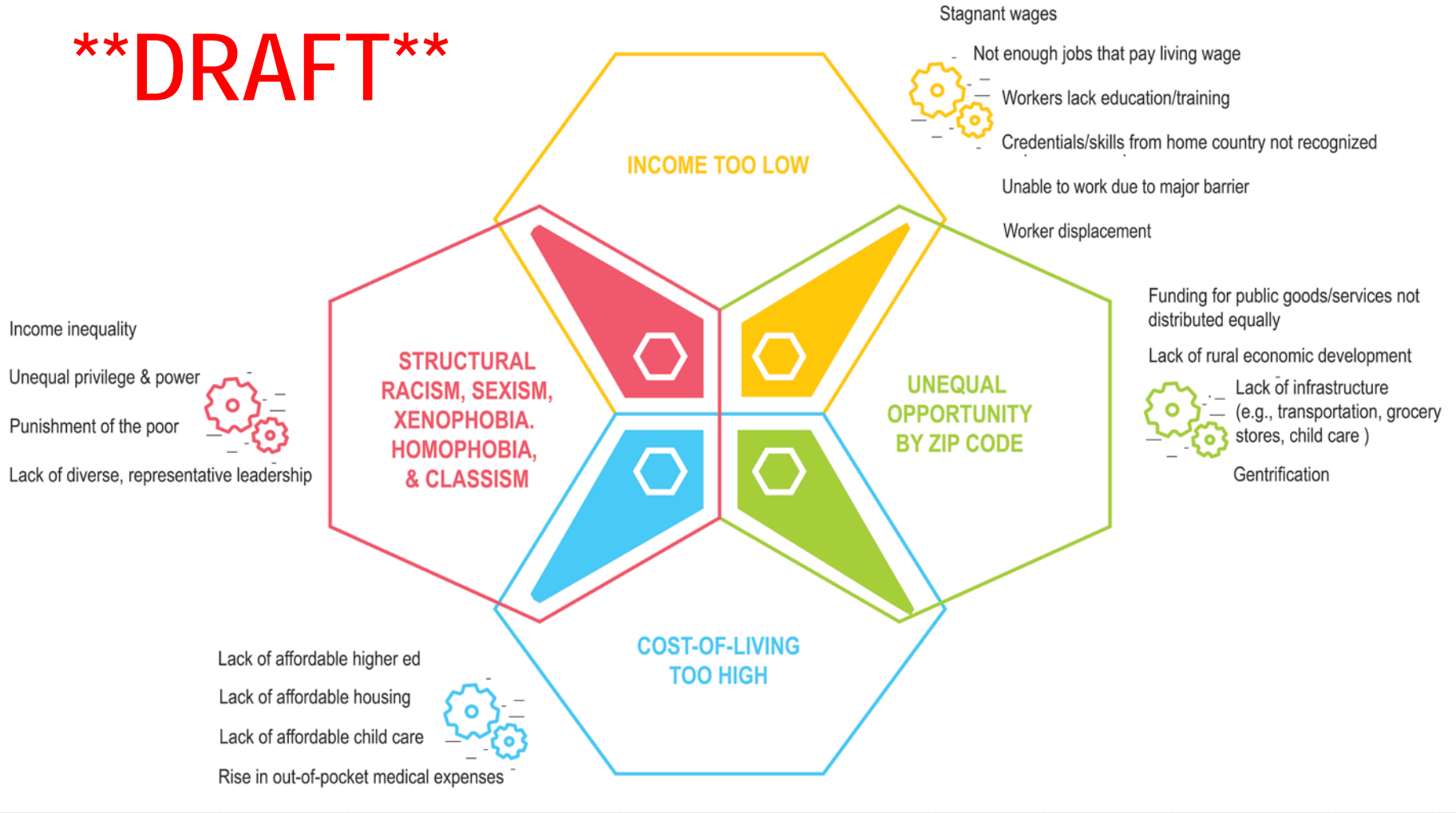
And being valued in community speaks to dignity, belonging, social capital, and social inclusion."

Progress: Timeline/Activities



SYSTEM DESIGNED TO PRODUCE THE RESULTS IT IS GETTING ON POVERTY

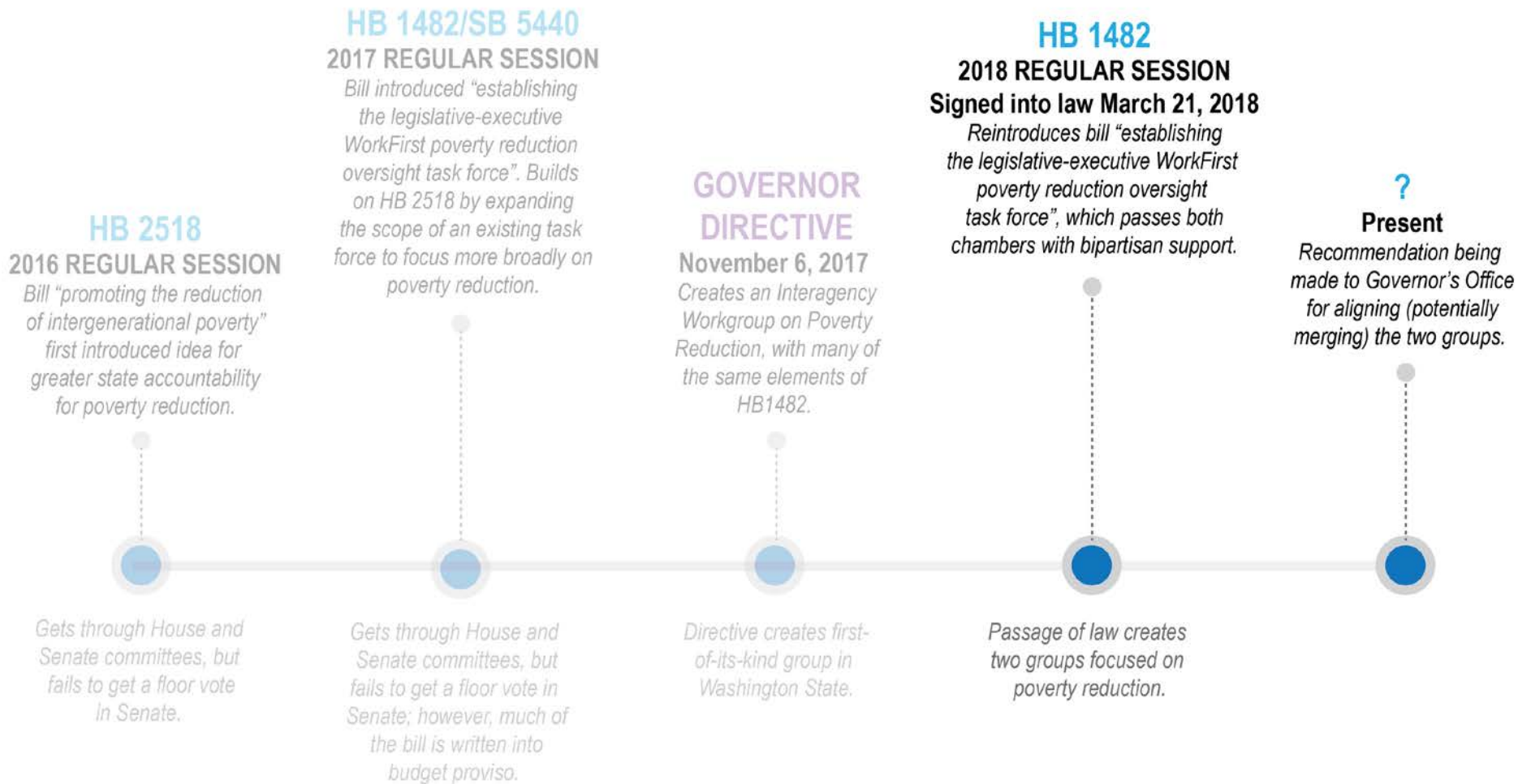
****DRAFT****



POVERTY EXACERBATES OUTCOMES IN OTHER SYSTEMS, WHICH OPERATE IN SILOES AND REINFORCE POVERTY/INEQUALITY



Background



Discussion

Transforming
Lives

If the system is designed to produce the results it gets, how would YOU change the system?